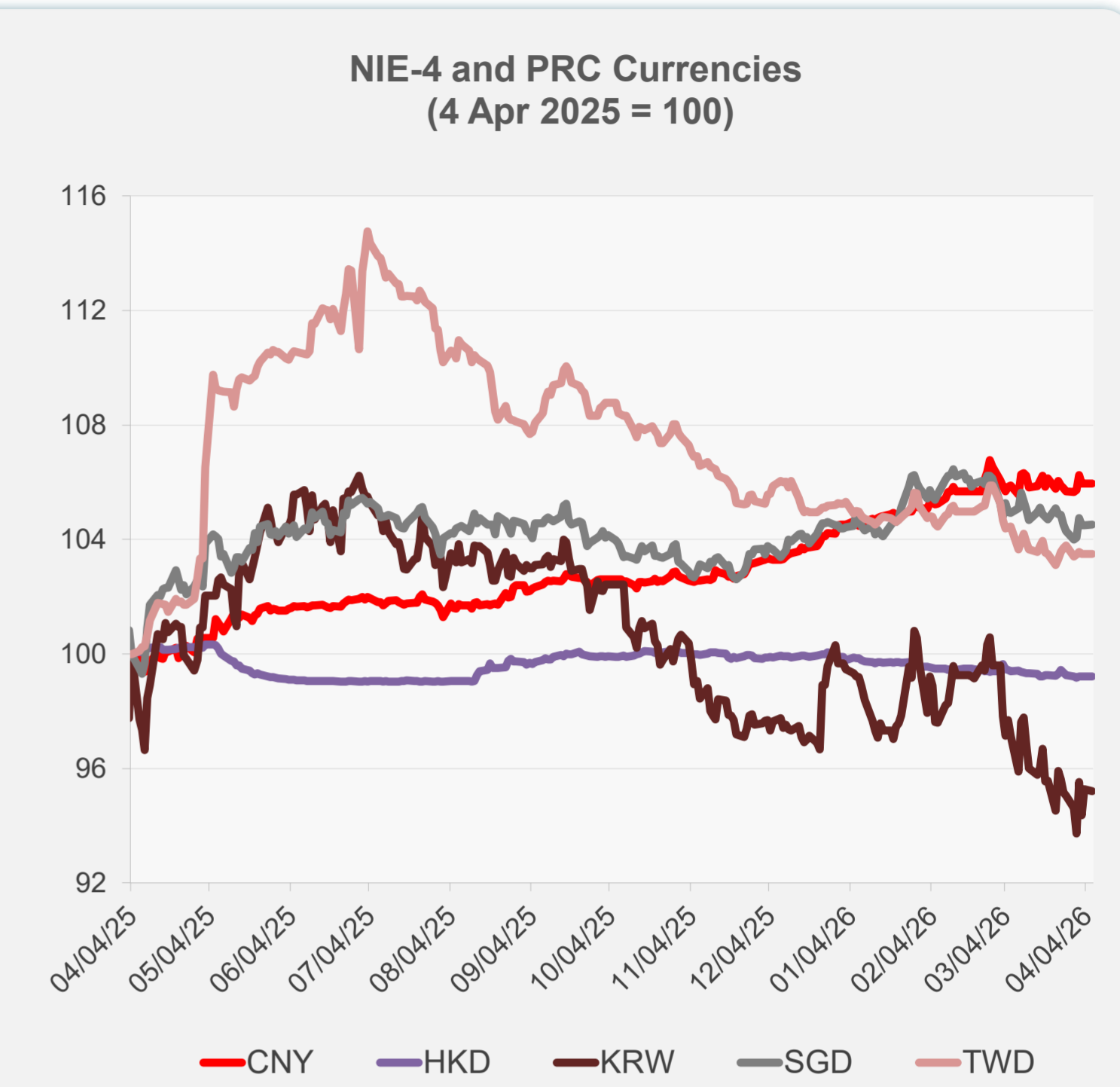
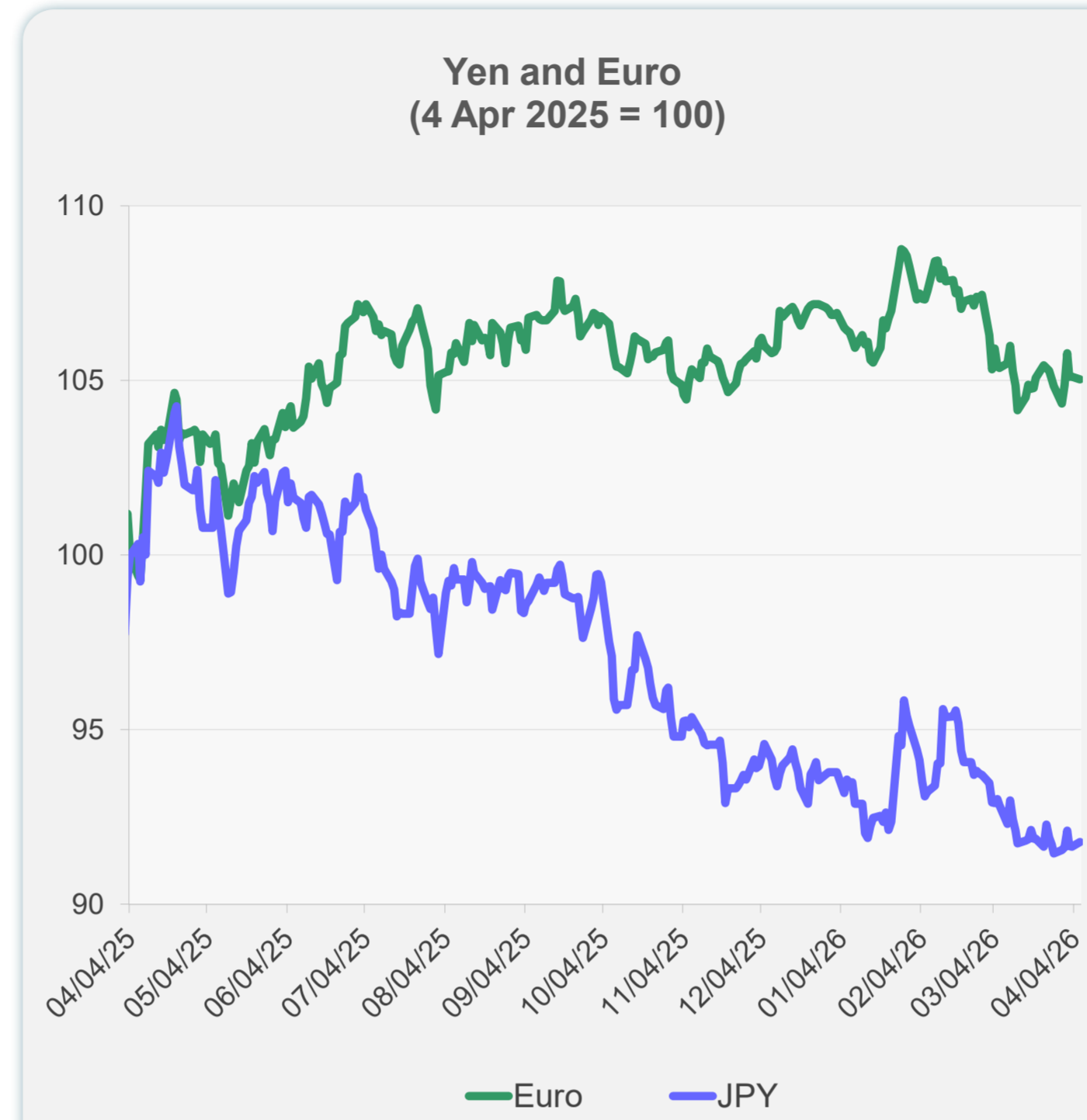
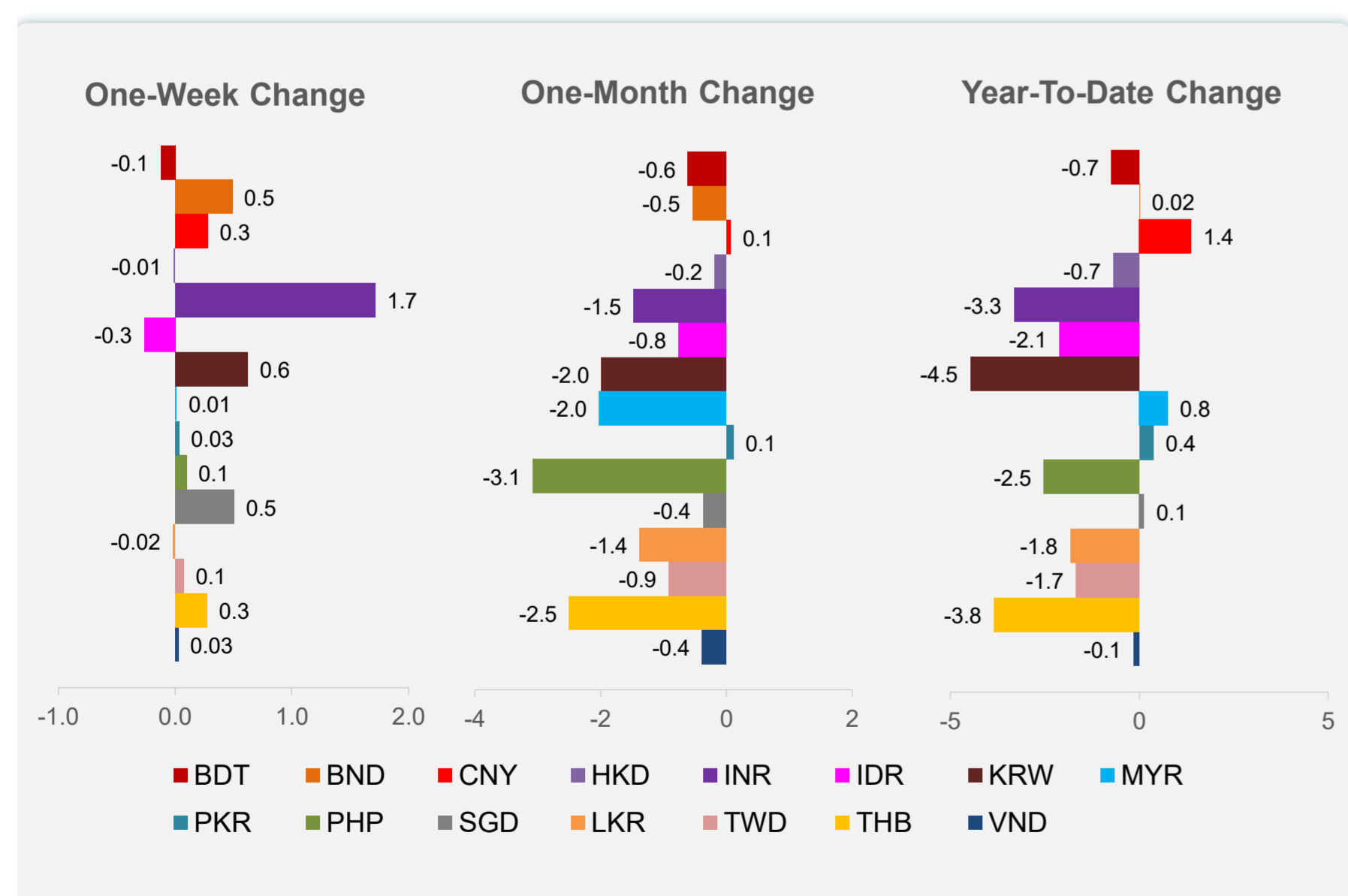
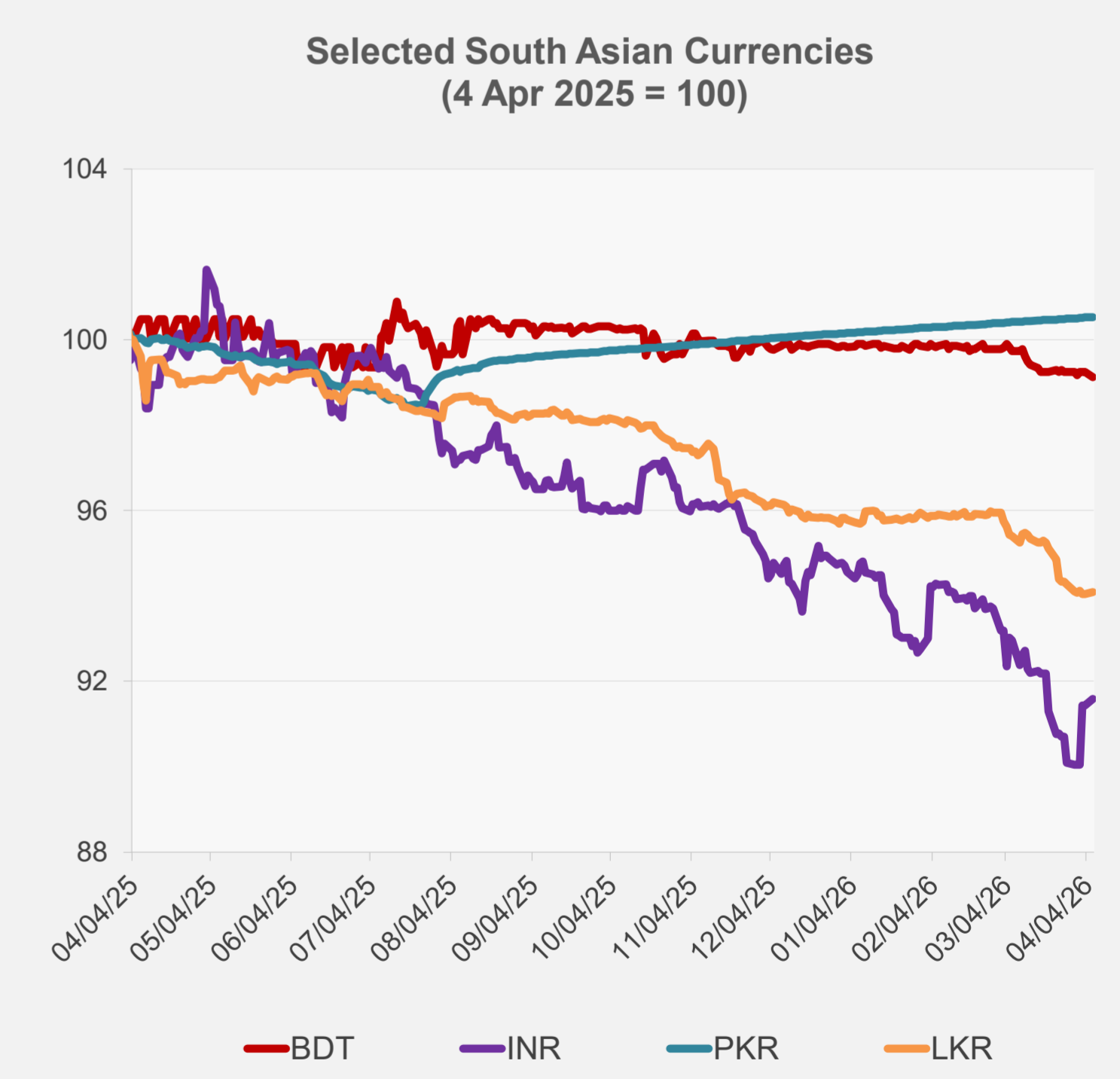
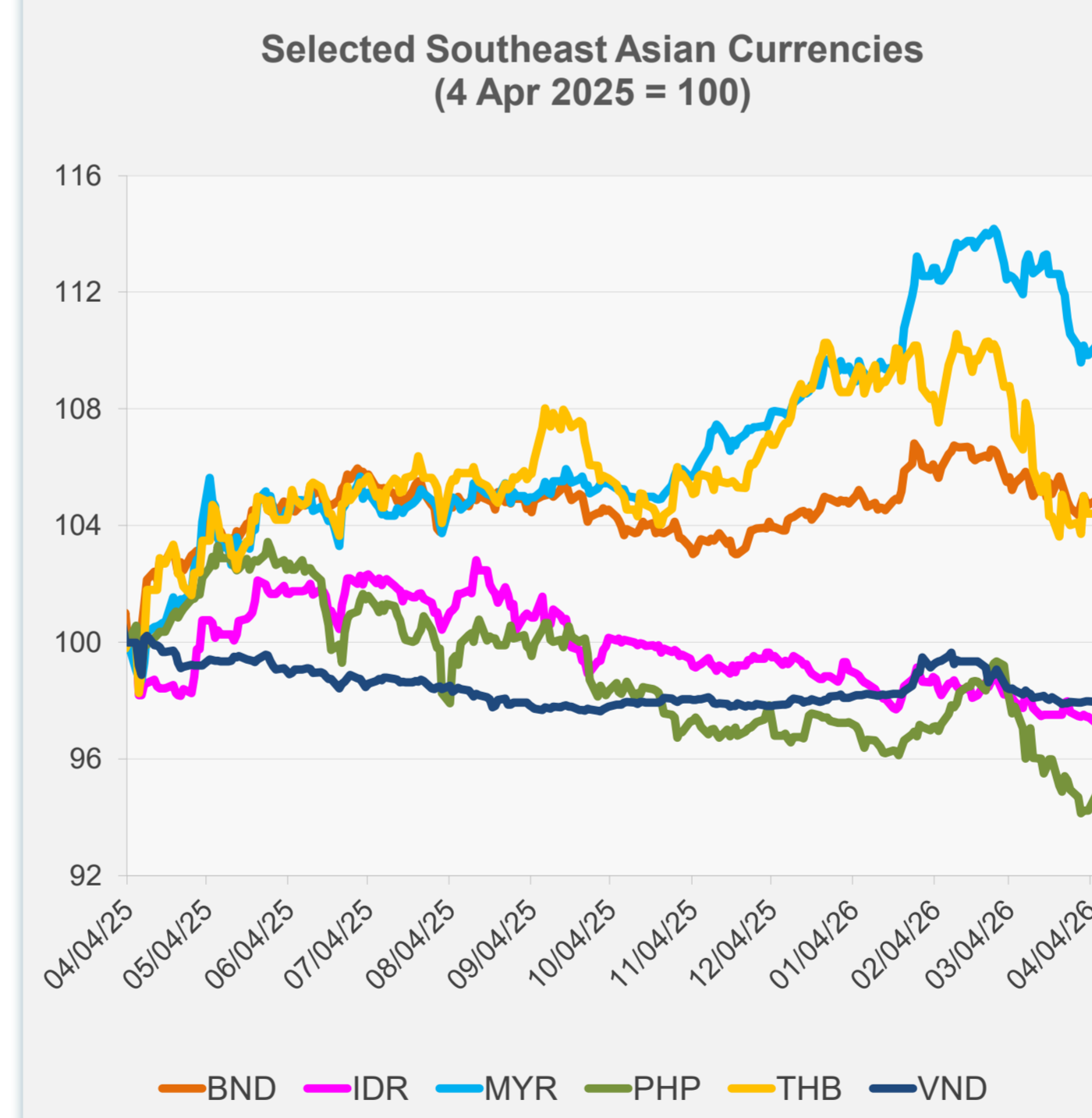


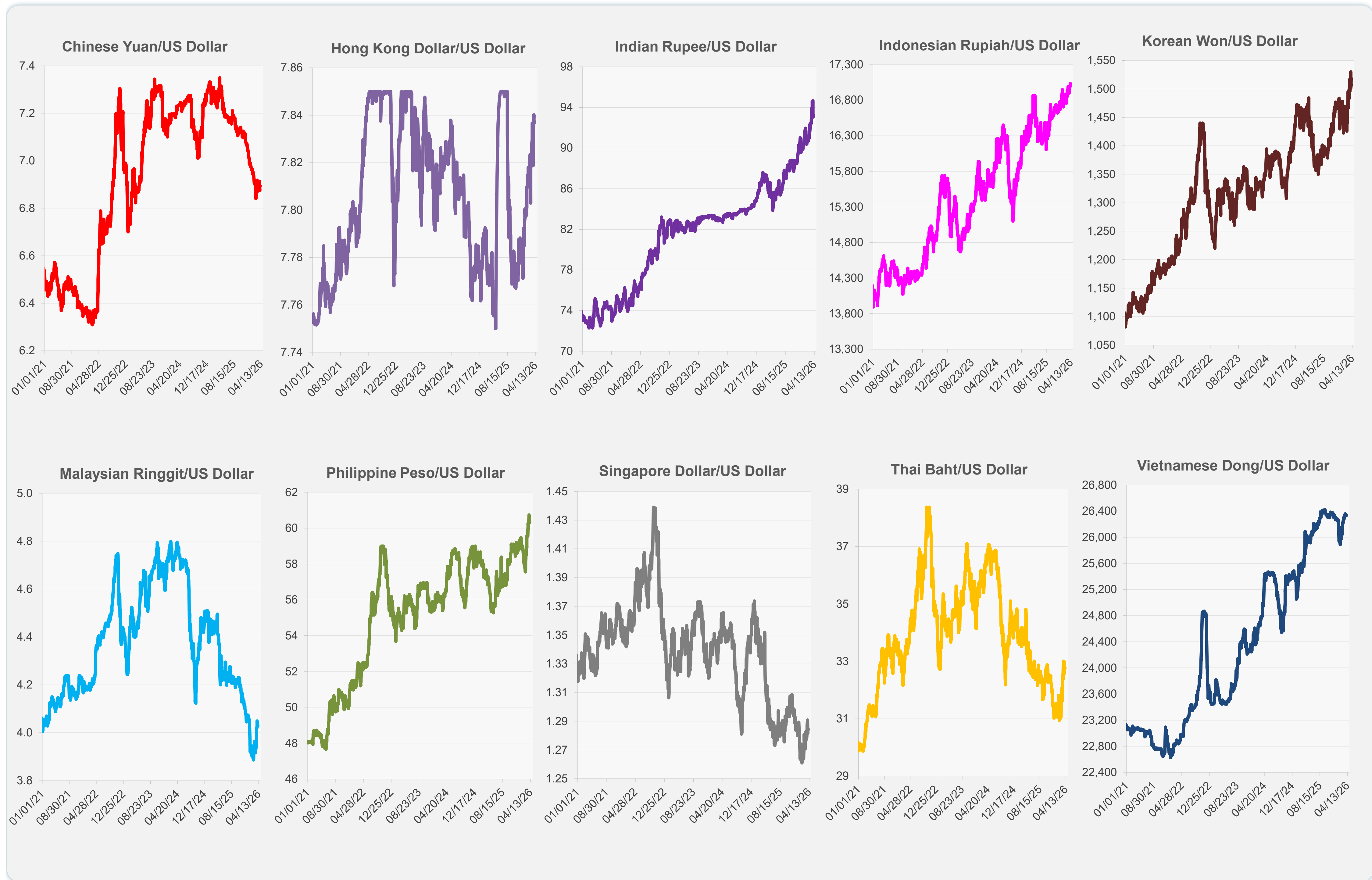
	Latest Closing	% change from Previous Day	% change from 01-Jan-26
Euro	0.87	-0.07	-1.72
Japanese yen (JPY)	159.38	0.14	-2.13
Bangladeshi taka (BDT)	123.15	-0.12	-0.73
Brunei dollar (BND)	1.28	0.15	0.02
Chinese yuan (CNY)	6.89	0.00	1.37
Hong Kong dollar (HKD)	7.84	0.01	-0.68
Indian rupee (INR)	93.06	0.16	-3.31
Indonesian rupiah (IDR)	17,035.00	-0.24	-2.11
Korean won (KRW)	1,506.30	-0.07	-4.47
Malaysian ringgit (MYR)	4.03	0.29	0.76
Pakistan rupee (PKR)	279.05	0.01	0.38
Philippine peso (PHP)	60.33	0.58	-2.52
Singapore dollar (SGD)	1.28	0.03	0.13
Sri Lanka rupee (LKR)	315.35	0.05	-1.82
Taipei,China NT dollar (TWD)	31.97	0.00	-1.67
Thai baht (THB)	32.76	0.00	-3.84
Vietnamese dong (VND)	26,337.00	-0.02	-0.14



NIE = Newly Industrialized Economies



Note: Negative/Decreasing values indicate depreciation of local currency, and positive/increasing values indicate appreciation.
Source: ADB calculations using data from Bloomberg and Haver Analytics.

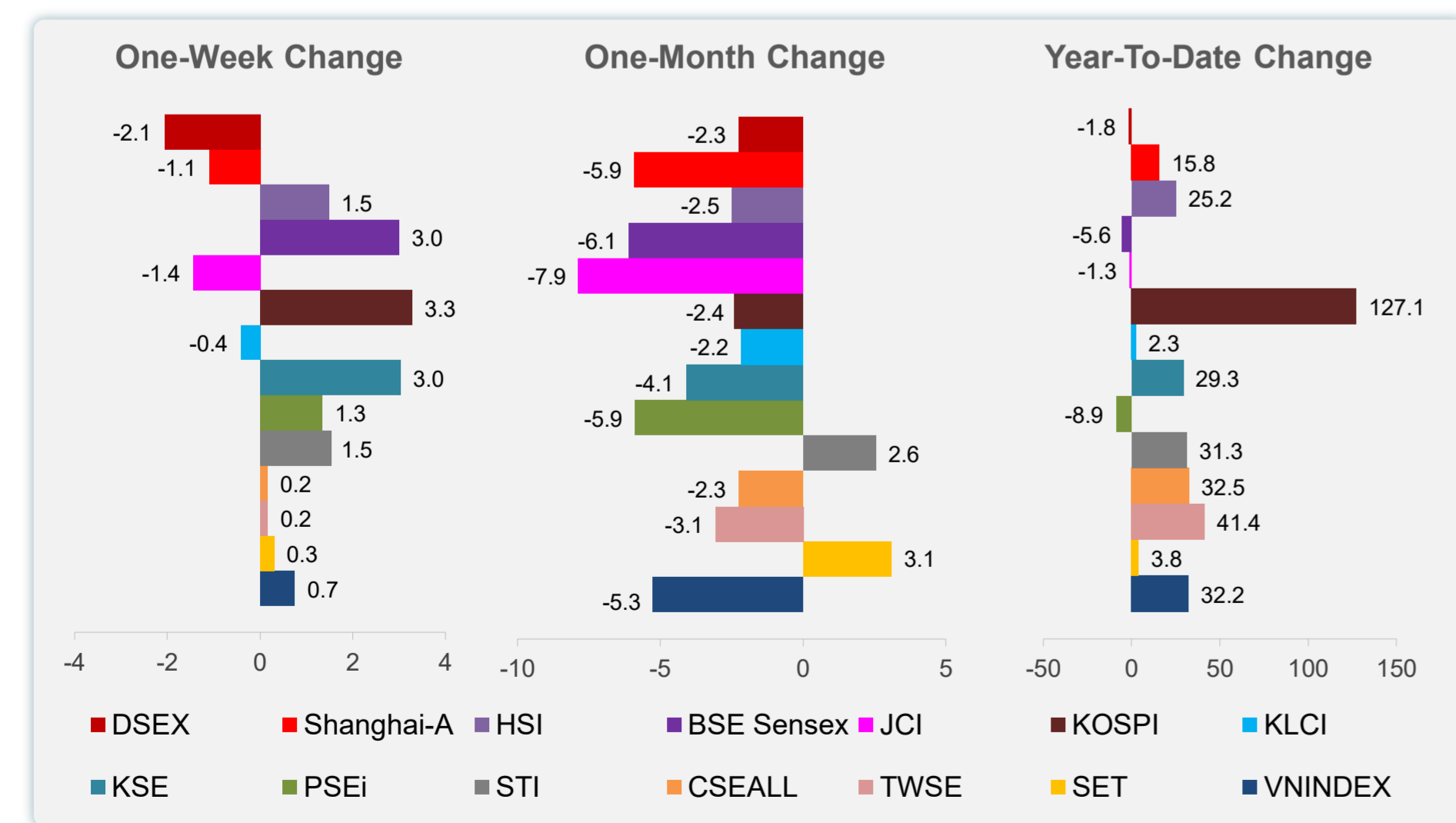
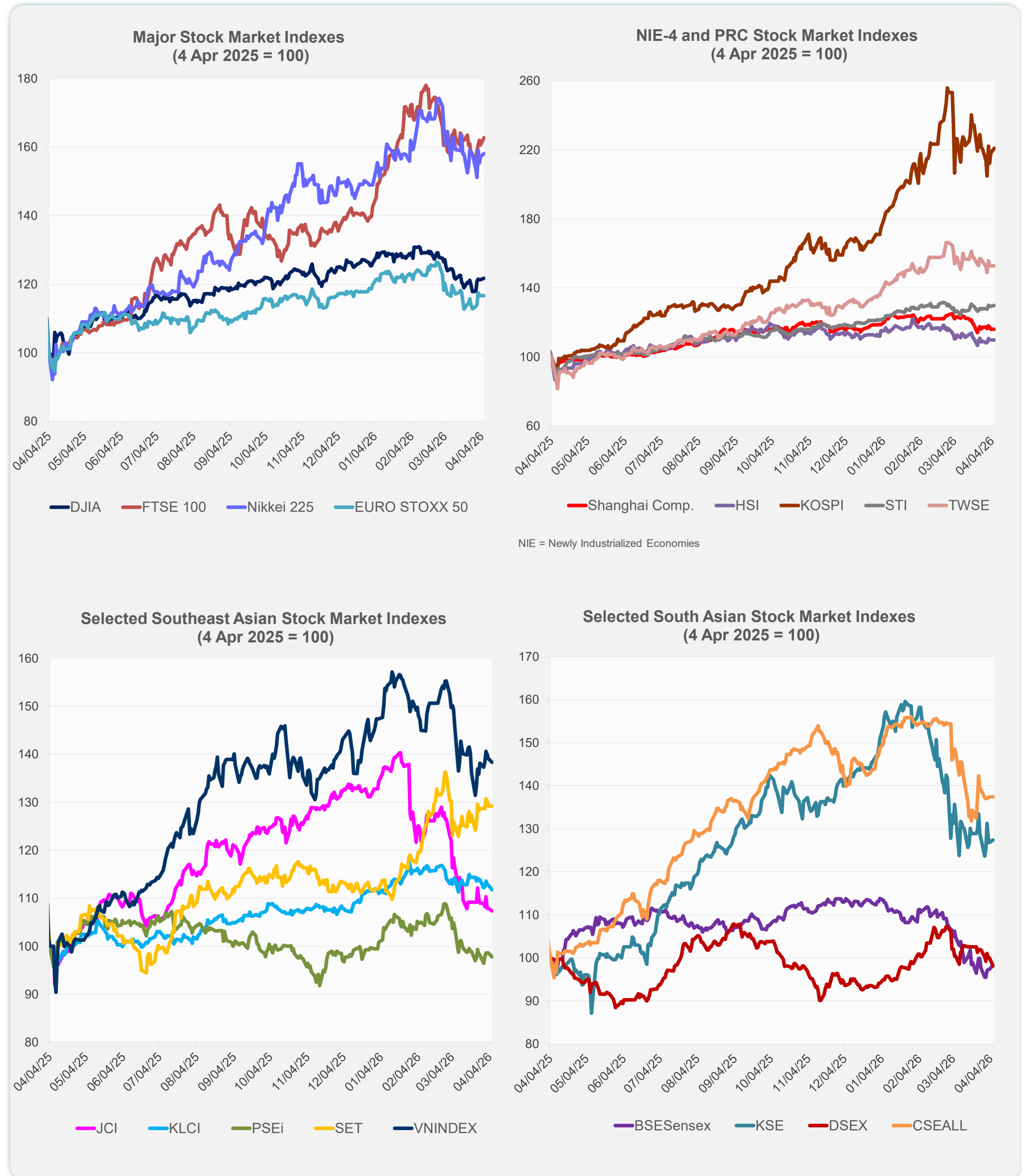


Source: Haver Analytics.

Daily Market Watch
STOCK INDEXES

7 April 2026, 9:00 AM Manila

	Latest Closing	% change from Previous Day	% change from 01-Jan-25
US Dow Jones Ind Avg	46,669.88	0.36	9.70
US NASDAQ	21,996.34	0.54	13.91
US S&P 500	6,611.83	0.44	12.41
UK FTSE 100	13,112.31	1.36	60.43
EURO STOXX 50	5,692.86	0.00	16.28
Japan NIKKEI 225	53,413.68	0.55	33.89
Bangladesh DSEX	5,122.53	-1.86	-1.83
PRC Shanghai Comp.	3,880.10	0.00	15.76
Hong Kong, China HSI	25,116.53	0.00	25.21
India BSE Sensex	74,106.85	1.07	-5.61
Indonesia JCI	6,989.43	-0.53	-1.28
Korea, Rep. of KOSPI	5,450.33	1.36	127.15
Malaysia KLCI	1,680.83	-0.87	2.34
Pakistan KSE 100	151,337.00	0.48	29.34
Philippines PSEi	5,948.33	-0.84	-8.89
Singapore STI	4,972.40	0.50	31.28
Sri Lanka CSEALL	21,126.60	0.04	32.50
Taipei, China TWSE	32,572.43	0.00	41.40
Thailand SET	1,454.00	0.00	3.84
Viet Nam VNINDEX	1,674.99	-0.54	32.22



Sources: ADB calculations using data from Bloomberg and CEIC Data Company.



Sources: ADB calculations using data from Bloomberg and CEIC Data Company.

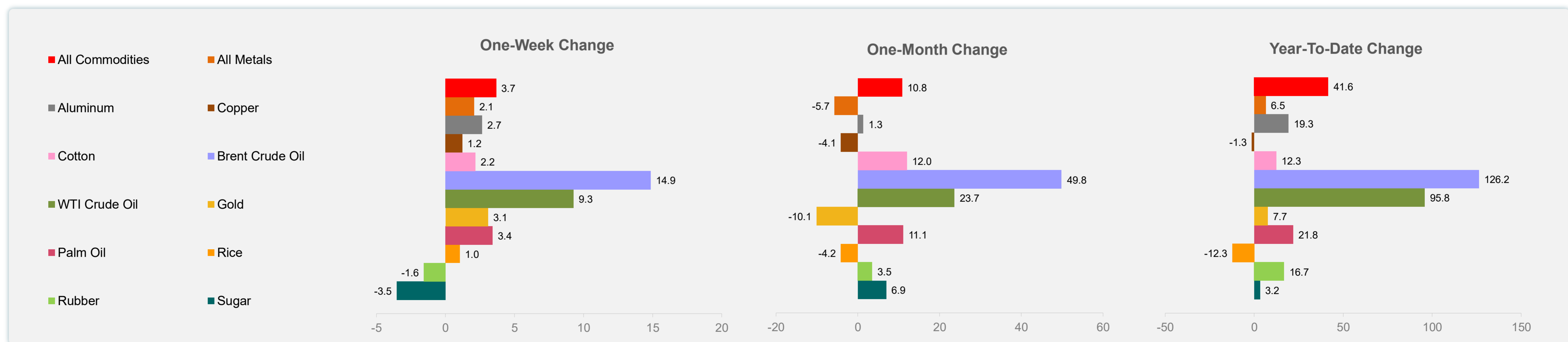
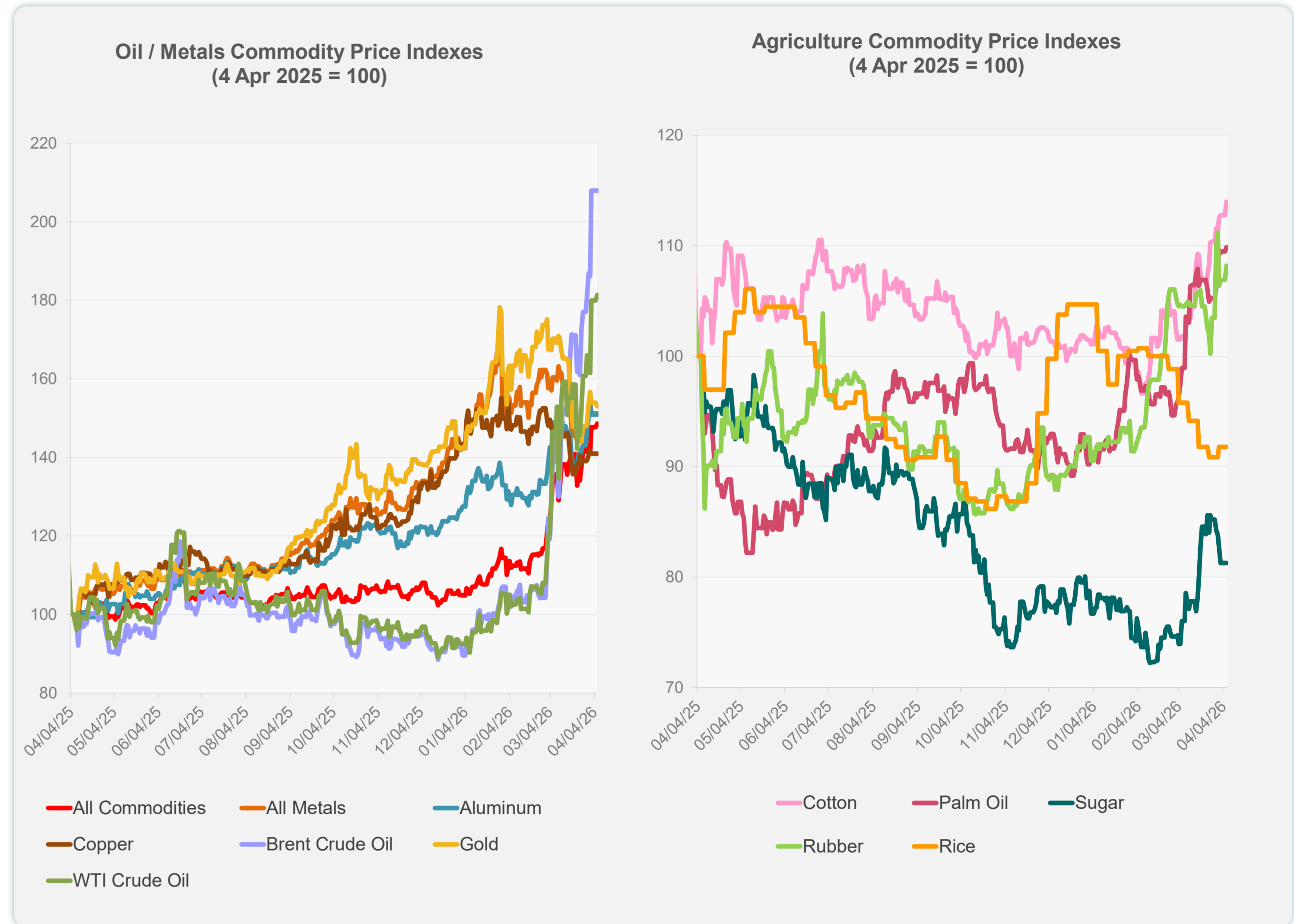
Daily Market Watch
COMMODITY PRICES

7 April 2026, 9:00 AM Manila

	Unit	Latest Closing	% change from Previous Day	% change from 01-Jan-26
S&P All Commodities	US\$	776.58	0.62	41.58
S&P All Metals	US\$	472.56	0.02	6.49
Aluminum	US\$/metric ton	3,539.68	0.00	19.26
Copper	US\$/metric ton	12,287.94	0.00	-1.33
Cotton	US cents/lb	69.67	1.09	12.33
Brent Crude Oil	US\$/barrel	141.26	0.00	126.22
WTI Crude Oil	US\$/barrel	112.41	0.78	95.77
Gold	US\$/troy oz	4,649.85	-0.58	7.65
Palm Oil	US\$/metric tonne	1,179.92	0.36	21.81
Rice ¹	US\$/metric ton	391.00	0.00	-12.33
Rubber ²	US\$/kg	251.00	1.21	16.74
Sugar	US cents/lb	15.27	0.00	3.25

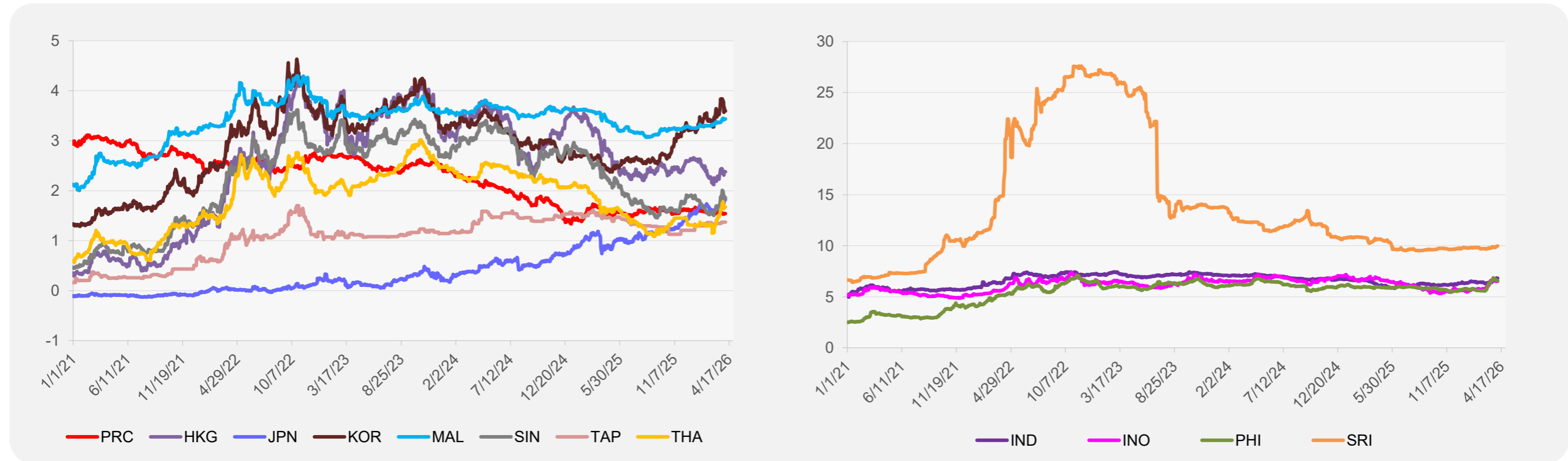
¹ Latest closing price from 1 April 2026.

² Singapore Exchange, Ribbed Smoked Sheet Rubber.

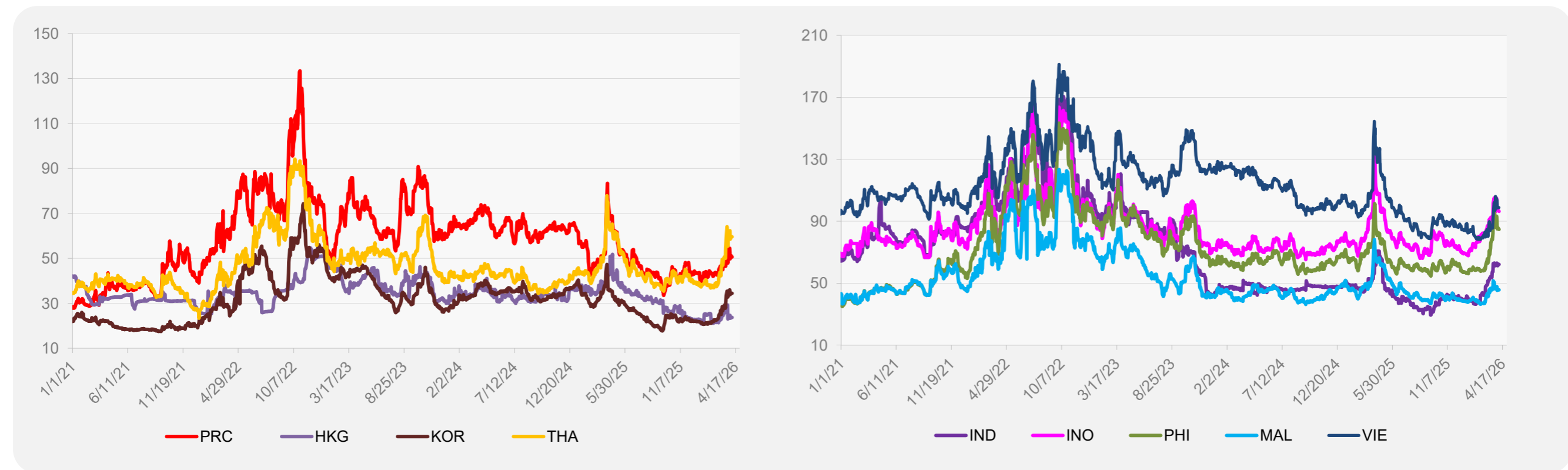


Source: ADB calculations using data from Bloomberg.

5-YEAR LOCAL CURRENCY GOVERNMENT BOND YIELDS (%)



5-YEAR CREDIT DEFAULT SWAP¹



¹ In USD and based on sovereign bonds.
Source: ADB calculations using data from Bloomberg.